

CPTED PUBLIC SAFETY/SECURITY DRAWING LEGEND	
KEY	DESCRIPTION
AC	ACCESS
LS	VANDAL-PROOF MOTION SENSOR ACTIVATED SECURITY LIGHT
PS	PHYSICAL - FENCING, WALLS, PLANTINGS
SN	SURVEILLANCE NATURAL - WINDOWS
TR	TERRITORIAL REINFORCEMENT/ BOUNDARY DEFINITION
WS	WARNING SIGN (BROWARD SHERIFF'S OFFICE NO TRESPASS)

NOTES:

- 1.- PROVIDE ANTI-PRY SECURITY BAR ON ALL SLIDING GLASS DOORS.
- 2.- BSO NO TRESSPASS SIGNS TO BE MOUNTED AT 6' TO 7' ABOVE GRADE.

NOTES

- IT IS NOTED THAT BSO RECOMMENDS INSTALLING VANDAL-RESISTANT, MOTION-SENSOR SECURITY ALERT LIGHTS OVER ALL EXTERIOR UNIT DOORS AND OVERHANGS—including main entries, garage doors, side garage egress doors, storage rooms, and sheds (if any)—AND THIS WILL BE INCORPORATED INTO THE PROJECT DESIGN AS APPLICABLE.

• IT IS NOTED THAT BSO RECOMMENDS CONCENTRATING SECURITY LIGHTING AT KEY ACCESS POINTS SUCH AS GATEWAYS, DOORWAYS, AND WINDOWS, WHILE AVOIDING OVER-ILLUMINATION AND THE CREATION OF SHADOWS, AND THIS WILL BE INCORPORATED INTO THE PROJECT DESIGN AS APPLICABLE.

• IT IS NOTED THAT BSO RECOMMENDS THE USE OF BRIGHT, SOFT LED LIGHTING WITH SHIELDED FIXTURES TO IMPROVE NIGHTTIME VISIBILITY WHILE MINIMIZING GLARE AND LIGHT POLLUTION TRESPASS, AND THIS WILL BE INCORPORATED INTO THE PROJECT DESIGN AS APPLICABLE.

• IT IS NOTED THAT BSO RECOMMENDS COORDINATING LIGHTING PLACEMENT TO SUPPORT SECURITY CAMERA OPERATION BY AVOIDING DIRECT ILLUMINATION INTO CAMERA LENSES, AND THIS WILL BE INCORPORATED INTO THE PROJECT DESIGN AS APPLICABLE.

• IT IS NOTED THAT BSO RECOMMENDS INCORPORATING PEDESTRIAN-SCALE LIGHTING ALONG DESIGNATED PEDESTRIAN TRAVEL PATHS SUCH AS SIDEWALKS, PARKING AREAS, AND RECREATIONAL WALKWAYS, AND THIS WILL BE INCORPORATED INTO THE PROJECT DESIGN AS APPLICABLE.

• IT IS NOTED THAT BSO RECOMMENDS HARDWIRING OR PREWIRING EACH RESIDENTIAL UNIT FOR BURGLAR ALARMS AND ENCOURAGING RESIDENTS TO USE SECURE SAFES FOR VALUABLES; THESE MEASURES WILL BE INCORPORATED INTO THE PROJECT DESIGN AS APPLICABLE.

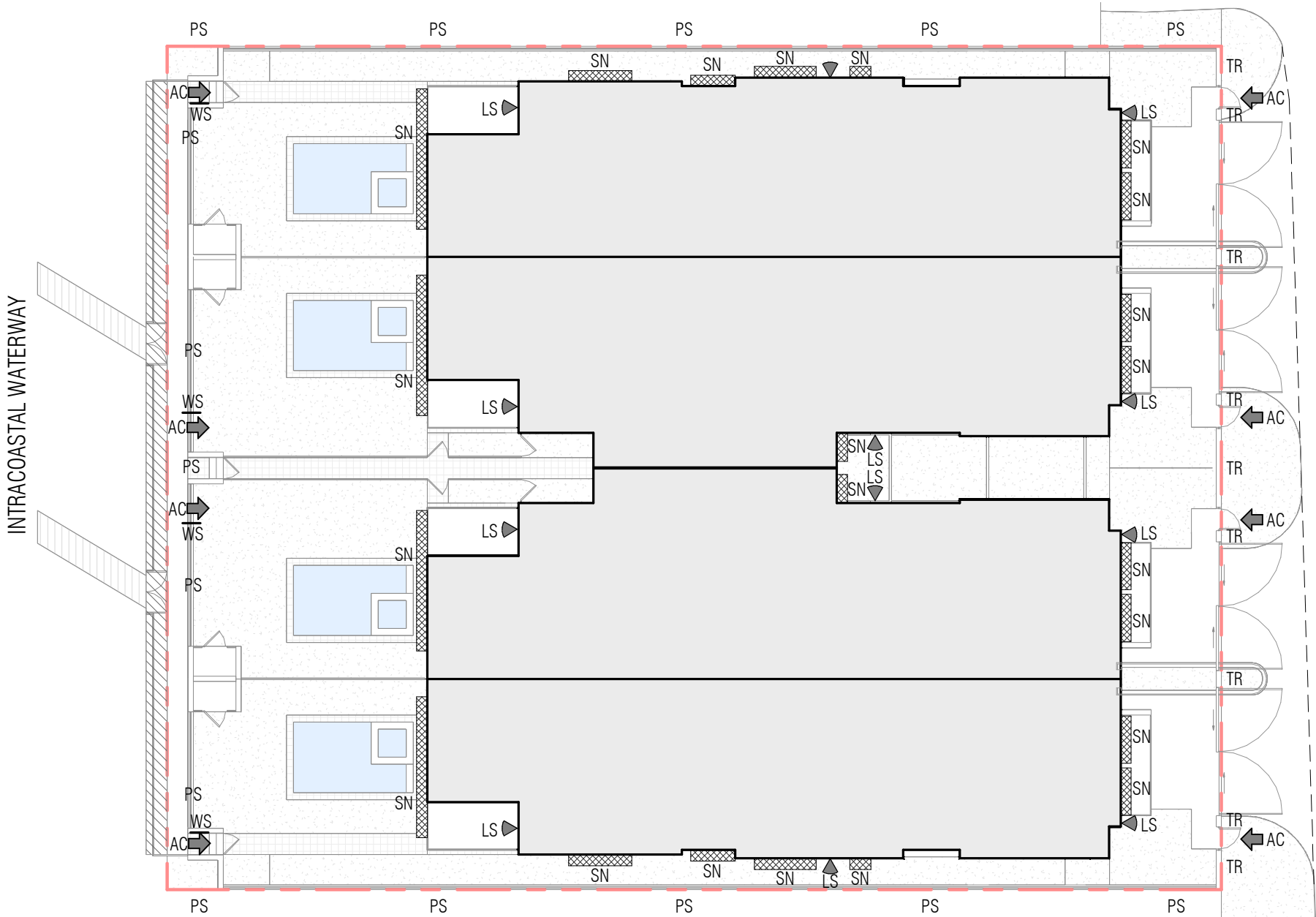
• IT IS NOTED THAT BSO RECOMMENDS DESIGNING FENCING TO SUPPORT NATURAL SURVEILLANCE USING CPTED-COMPLIANT MATERIALS SUCH AS SEE-THROUGH STEEL RAIL FENCING, AND THIS WILL BE INCORPORATED INTO THE PROJECT DESIGN AS APPLICABLE.

• IT IS NOTED THAT BSO RECOMMENDS INSTALLING ROBUST ANTI-PRY SECURITY BARS ON ALL GROUND-LEVEL AND SECOND-FLOOR SLIDING GLASS DOORS, AND THIS WILL BE INCORPORATED INTO THE PROJECT DESIGN AS APPLICABLE.

• IT IS NOTED THAT BSO RECOMMENDS SECURING ALL PUBLICLY ACCESSIBLE EXTERIOR ELECTRICAL OUTLETS WITH LOCKABLE METAL COVERS AND INTERNAL CUTOFF SWITCHES, AND THIS WILL BE INCORPORATED INTO THE PROJECT DESIGN AS APPLICABLE.

• IT IS NOTED THAT BSO RECOMMENDS SECURING ALL PUBLICLY ACCESSIBLE EXTERIOR WATER SPIGOTS WITH LOCKING CAPS IN EASILY ACCESSIBLE LOCATIONS, AND THIS WILL BE INCORPORATED INTO THE PROJECT DESIGN AS APPLICABLE.

• IT IS NOTED THAT BSO RECOMMENDS PROVIDING ADDRESS SIGNAGE THAT IS CLEARLY VISIBLE FROM THE ROADWAY, UNOBSTRUCTED BY LANDSCAPING, WITH HIGH CONTRAST AND REFLECTIVE OR ILLUMINATED FEATURES FOR EMERGENCY VISIBILITY, AND THIS WILL BE INCORPORATED INTO THE PROJECT DESIGN AS APPLICABLE.



DRC

P225-12000009

09/03/2025

SOUTH RIVERSIDE DRIVE